

Ball Valve

Design Feature:

- 2 Pc Split Body Construction
- Full Port
- Blow Out Proof Stem
- Integral Actuator Mounting Pad
- Flanged Ends

Conformity to Standards & Codes :

Design & Face to Face Dimensions :
BS 5351 / ISO 17292 /
ASME B 16.10

Valve Testing : API 598

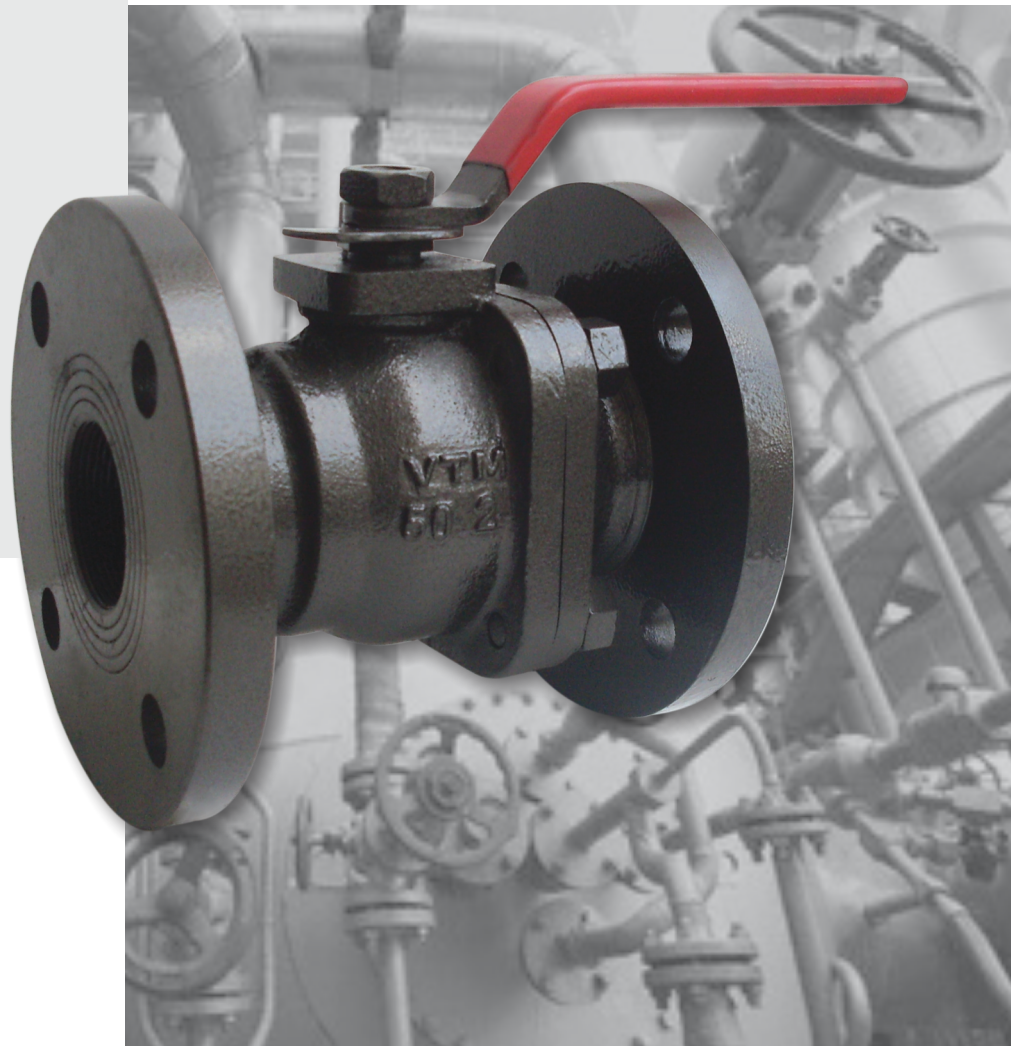
Flange Standard Conformity :
ASME B16.5 CL 150 / DIN PN 10 & 16

Size Range :
15mm (1/2") to 150mm (6")

Applications:

- Oil Refineries
- Compressed Air / Gas Installations
- Chemical & Solvent Industries
- Petrochemical Industries
- Process Industries

VA-24 VA-26

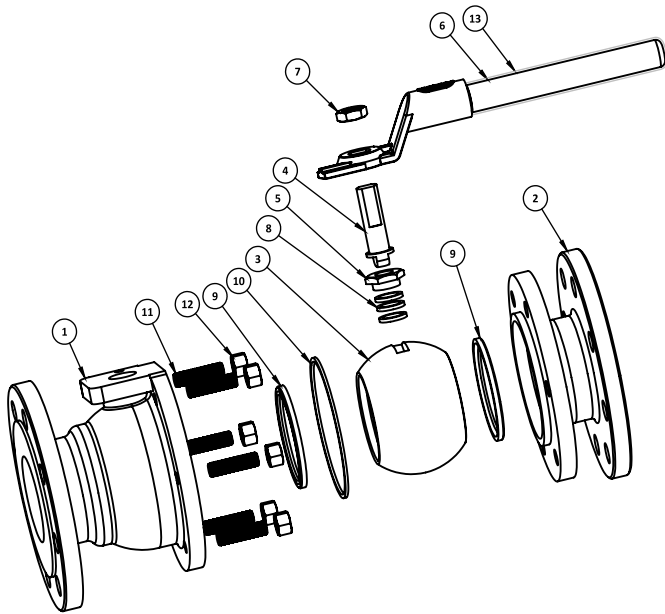


DOC. NO. : VAV-C-1012;REV.01;REV. DATE: 12-11-2014



An ISO 9001: 2008 Certified Co.





PART LIST

| S.NO. | PART NAME | MATERIAL | SPECIFICATIONS | QTY. |
|-------|---------------|---------------------------------|---|------|
| 1 | BODY | GREY CAST IRON/ CARBON STEEL | IS 210 GR. FG.200/ ASTM A216 GR. WCB | 1 |
| 2 | FLANGES | GREY CAST IRON/ CARBON STEEL | IS 210 GR. FG.200/ ASTM A216 GR. WCB | 1 |
| 3 | BALL | STAINLESS STEEL | ASTM A276 GR.202/304/316, ASTM A351 GR. CF8/CF8M | 1 |
| 4 | SPINDLE | STAINLESS STEEL | ASTM A276 GR. 410/304/316 | 1 |
| 5 | GLAND NUT | STAINLESS STEEL | AISI 202/304/316 | 1 |
| 6 | HAND LEVER | CARBON STEEL | ASTM A105 | 1 |
| 7 | LOCK NUT | STAINLESS STEEL | AISI 202/304/316 | 1 |
| 8 | GLAND PACKING | PTFE | BS 6564 | 4 |
| 9 | SEAT RING | PTFE | BS 6564 | 2 |
| 10 | BODY SEAL | PTFE | BS 6564 | 1 |
| 11 | STUD | CARBON STEEL | ASTM A307 GR. B/ ASTM A193 Gr.B7 | 4 |
| 12 | NUT | CARBON STEEL | ASTM A307 GR. B/ ASTM A194 Gr.B7 | 4 |
| 13 | HANDLE SLEEVE | PVC | BS 6076 | 1 |

DIMENSIONS

| NOMIAL SIZE | | FLANGED AS PER PN-16 | | | | | | | | | | | FLANGED AS PER CL 150 | | | | | | | | | | |
|-------------|-----|----------------------|-----|-----|-----|-----|-----|----|---|-----|----|---|-----------------------|-----|-------|-----|-----|-----|------|---|-------|-------|---|
| Inches | MM | A | B | C | D | E | F | G | H | I | J | K | A | B | C | D | E | F | G | H | I | J | K |
| 1/2" | 15 | 108 | 14 | 45 | 95 | 62 | 135 | 14 | 2 | 65 | 14 | 4 | 108 | 14 | 35.0 | 90 | 62 | 135 | 10.0 | 2 | 60.3 | 16.00 | 4 |
| 3/4" | 20 | 117 | 19 | 58 | 105 | 65 | 152 | 16 | 2 | 75 | 14 | 4 | 117 | 19 | 43.0 | 100 | 65 | 152 | 10.9 | 2 | 69.9 | 16.00 | 4 |
| 1" | 25 | 127 | 24 | 68 | 115 | 73 | 152 | 16 | 2 | 85 | 14 | 4 | 127 | 24 | 50.8 | 110 | 73 | 152 | 11.6 | 2 | 79.4 | 16.00 | 4 |
| 1-1/4" | 32 | 140 | 31 | 78 | 140 | 91 | 165 | 18 | 2 | 100 | 18 | 4 | 140 | 31 | 63.5 | 115 | 91 | 165 | 13.2 | 2 | 88.9 | 16.00 | 4 |
| 1-1/2" | 40 | 165 | 38 | 88 | 150 | 103 | 195 | 18 | 3 | 110 | 18 | 4 | 165 | 38 | 73.0 | 125 | 103 | 195 | 14.7 | 2 | 98.4 | 16.00 | 4 |
| 2" | 50 | 178 | 50 | 102 | 165 | 112 | 195 | 20 | 3 | 125 | 18 | 4 | 178 | 50 | 92.0 | 150 | 112 | 195 | 16.3 | 2 | 120.7 | 19.00 | 4 |
| 2-1/2" | 65 | 190 | 63 | 122 | 185 | 132 | 302 | 20 | 3 | 145 | 18 | 4 | 190 | 63 | 104.8 | 180 | 132 | 302 | 17.9 | 2 | 139.7 | 19.00 | 4 |
| 3" | 80 | 203 | 76 | 138 | 200 | 142 | 302 | 20 | 3 | 160 | 18 | 8 | 203 | 76 | 127.0 | 190 | 142 | 302 | 19.5 | 2 | 152.4 | 19.00 | 4 |
| 4" | 100 | 229 | 100 | 158 | 220 | 166 | 365 | 22 | 3 | 180 | 18 | 8 | 229 | 100 | 157.2 | 230 | 166 | 365 | 24.3 | 2 | 190.5 | 19.00 | 8 |
| 5" | 125 | 254 | 125 | 188 | 250 | 212 | 520 | 22 | 3 | 210 | 18 | 8 | 254 | 125 | 185.7 | 255 | 212 | 520 | 24.3 | 2 | 215.9 | 22.40 | 8 |
| 6" | 150 | 267 | 150 | 212 | 285 | 254 | 520 | 24 | 3 | 240 | 22 | 8 | 267 | 150 | 215.9 | 280 | 254 | 520 | 25.9 | 2 | 241.3 | 22.40 | 8 |

*All dimensions are in mm unless and otherwise specified.

TEST PRESSURE

| Type of Test | Grey Cast Iron | Carbon Steel |
|--------------------------------|-------------------------|------------------------|
| Hydraulic Body Test | 24 Kg/Cm ² | 30 Kg/Cm ² |
| Hydraulic Seat Test | 17.6 Kg/Cm ² | 22 Kg/Cm ² |
| Pneumatic Seat Test (Optional) | 4-7 Kg/Cm ² | 4-7 Kg/Cm ² |

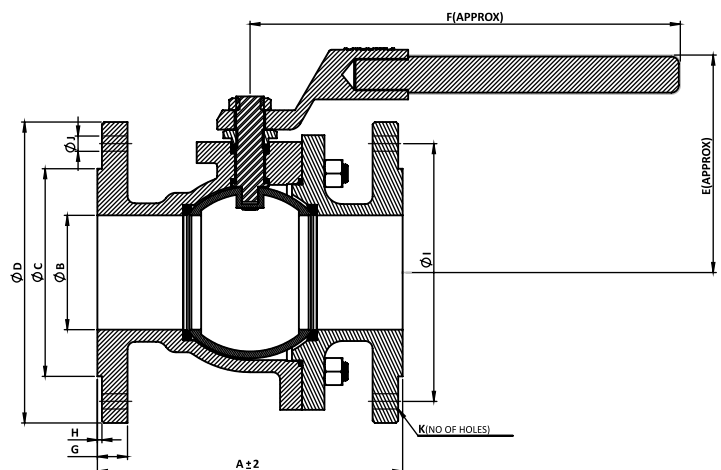
GUARANTEE

All valves are guaranteed against any manufacturing defects for a period of 12 months from date of supply, provided the valves have not been misused, damaged or installed for services they are not recommended. The company shall be liable to furnish part / parts thereof or full valve as the company may deem fit.

V.A. VALVES

Regd. Office & Works: Udyog Nagar, Gadaipur, Jalandhar City -144 004
 Phone: +91-181-2601540, 2601541 Fax: +91-181-2601741
 E-mail : marketing@vk-utam.com, info@vtm-valves.com
 Website : www.vk-utam.com, www.vtm-valves.com

Due to continuous development program, design and data in this leaflet are subject to change without prior notice.



Authorized Stockist

Our associates:



PIONEERING FLUID CONTROLS