

MOTORIZED BALL VALVE



MOTORIZED BALL VALVE



Electric ball valve assembled force of actuator from 16Nm, 24Nm, to 32Nm with DN65--DN150 valve body. Supply voltage optional: AC24V±10% 50/60Hz or AC220V±10% 50/60Hz, 0-10VDC or 4-20mA control signal can choose, as well as 0-10VDC position feedback signal. It widely used in air conditioning, refrigeration, heating and building auto control system, can adjust the medium flow precision, achieved goal to control temperature, humidity, pressure and energy saving.

Features

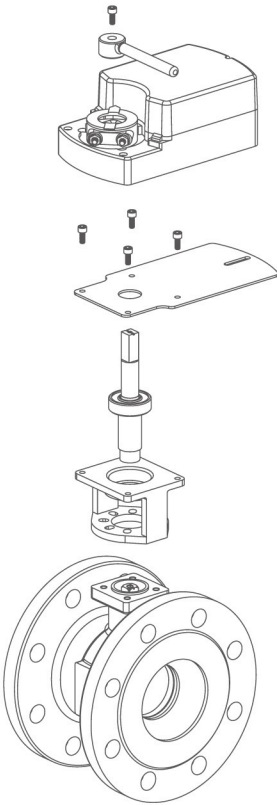
- Equal percentage flow characteristic, overall design, zero leaking
- Actuator can be installed 4 directions easy to wire and maintenance
- Built-in two floating auxiliary switch equip with shut power while in place
- Manual button to control spool angle
- Actuator dismounting and installation easily, after pipe and equipment finished

DOC. NO. : VAV-C-1040; REV. : 00; REV. DATE : 23-09-2018

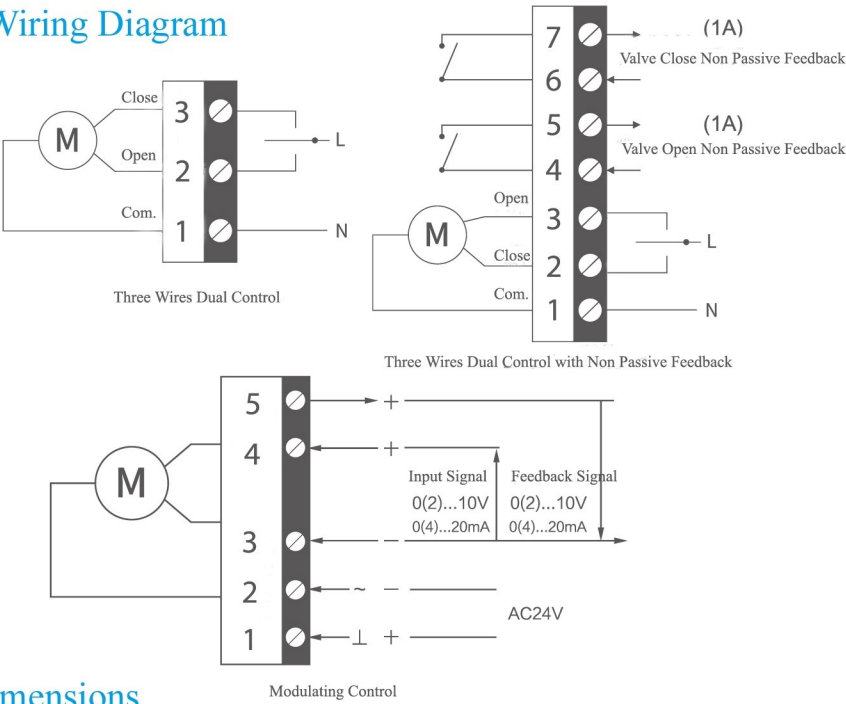
Technical Data

Size: DN65-DN150
Connection: thread
Mode: 3-point/on off/ 0-10VDC or 4-20mA
Voltage: AC220V or AC24V
Power: 6.5W
Drive Torque:16Nm 24Nm 32Nm
Act time:40-200s

Installation

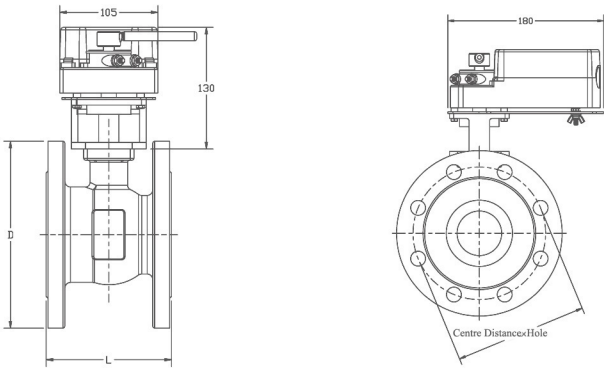


Wiring Diagram



Dimensions

Size	L	D	Centre DistancexHole
DN65	115	185	145×4
DN80	135	200	160×8
DN100	165	220	180×8
DN125	200	250	210×8
DN150	230	285	240×8



Specifications

Item No.	Type	DN	KVs	Thread	Closeoff D.P. (Mpa)	Medium	Fluid Temp.	Environment Temp.	N.P. (MPa)	Voltage
DN65	2 Way	DN65	64	G2½ "	0.4	Chilled / Hot Water	1~95°C	0~60°C	2.0	AC 24V AC 110V AC 220V 50/60HZ
DN80	2 Way	DN80	102	G3 "	0.4					
DN100	2 Way	DN100	163	G4 "	0.4					
DN125	2 Way	DN125	260	G5 "	0.4					
DN150	2 Way	DN150	416	G6 "	0.4					