

# Double Offset Butterfly Valves

**VA-37/40**

## Introduction:

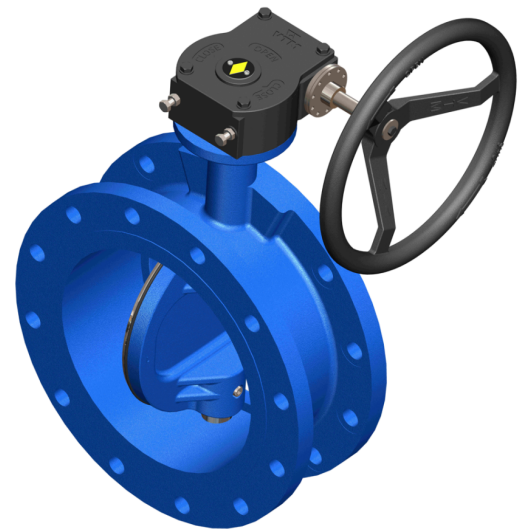
Welcome to our catalogue featuring Double Offset Butterfly Valves, a critical component in various industrial applications. Designed for precision control and reliable performance, our double offset butterfly valves offer superior sealing and durability. Below are the specifications and features of our double offset butterfly valves.

## Product Specifications:

- **Valve Type:** Double Offset Butterfly Valve
- **Material:** Stainless Steel, Carbon Steel, Ductile Iron
- **Size Range:** 2 inches to 40 inches
- **Pressure Rating:** ANSI Class 150, PN16, PN25, PN40
- **End Connections:** Wafer, Lug, Flanged
- **Temperature Range:** -50°C to 250°C (-58°F to 482°F)  
depending on materials
- **Actuation:** Manual, Pneumatic, Electric
- **Design Standard:** API 609, ASME B16.34, EN 593,  
& MSS SP-68
- **Face-to-Face Dimension:** API 609, EN 558
- **Seal Material:** EPDM, NBR, Viton, PTFE

## Features:

- **Double Offset Design:** Reduces friction and wear during operation, resulting in extended valve life and improved performance.
- **Bubble-Tight Shut-Off:** Precision-engineered sealing mechanism ensures reliable shut-off even in high-pressure or high-temperature applications.
- **Low Torque Operation:** Reduced torque requirement for operation, enhancing efficiency and ease of use.
- **Bi-Directional Sealing:** Provide leak-tight Performance in the both flow directions, ensuring versatility and reliability.

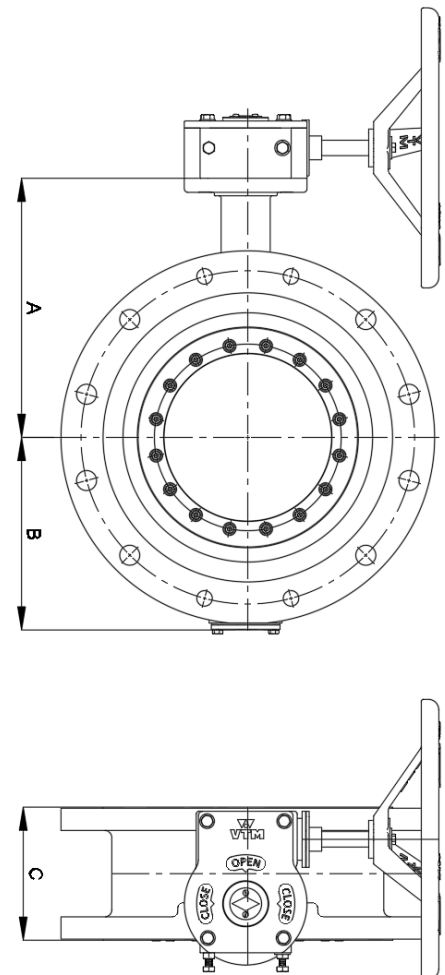


- **Wide Range of Applications:** Suitable for various industries including oil & gas, petrochemical, water treatment, HVAC, and more.
- **Easy Maintenance:** Designed for easy disassembly and maintenance, minimizing downtime and reducing operational costs.
- **Optional Features:** Locking device, extended bonnets.

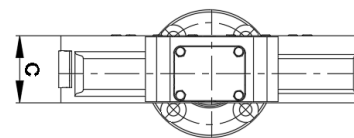
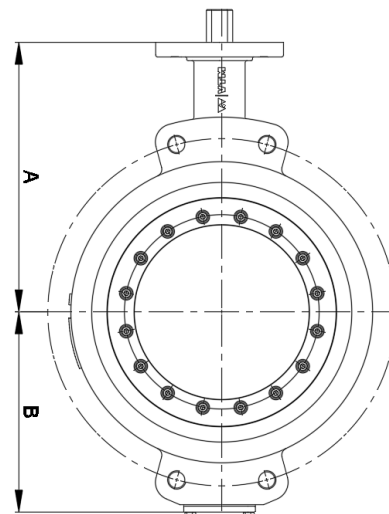
### Applications:

- **Oil & Gas:** Flow control in pipelines, refinery processes, offshore platforms.
- **Water Treatment:** Regulation of flow in water distribution systems, wastewater treatment plants.
- **Chemical Processing:** Handling corrosive fluids, chemical transfer applications.
- **Power Generation:** Steam regulation, cooling water systems, boiler feed water control.
- **HVAC:** Heating and cooling systems, ventilation control.
- **Food & Beverage:** Processing and handling of food grade liquids.

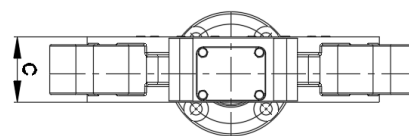
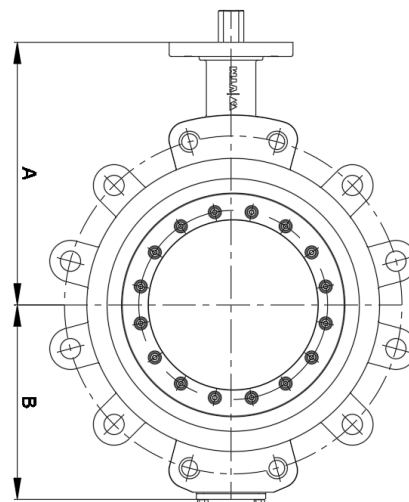
VALVE SIZE	VALVE DIMENSIONS		
	A	B	C
mm	mm	mm	mm
100	172	123	127
150	205	148	140
200	240	173	152
250	272	217	165
300	310	249	178
350	370	274	190
400	400	312	216
450	430	330	222
500	465	367	229
600	515	429	267
700	600	484	292
750	630	511	318
800	762	568	318
900	838	642	410
1000	940	692	410



VALVE SIZE	VALVE DIMENSIONS		
	A	B	C
mm	mm	mm	mm
100	172	123	54
150	205	148	57
200	240	173	64
250	272	217	71
300	310	249	81
350	370	274	92
400	400	312	102
450	430	330	114
500	465	367	127
600	515	429	154
700	600	484	165
750	630	511	190
800	762	568	190
900	838	642	203
1000	940	692	216



VALVE SIZE	VALVE DIMENSIONS		
	A	B	C
mm	mm	mm	mm
100	172	123	54
150	205	148	57
200	240	173	64
250	272	217	71
300	310	249	81
350	370	274	92
400	400	312	102
450	430	330	114
500	465	367	127
600	515	429	154
700	600	484	165
750	630	511	190
800	762	568	190
900	838	642	203
1000	940	692	216



## V.A. VALVES

ISO 9001:2015 CERTIFIED  
Regd. Office & Works : Udyog Nagar,  
Gadaiapur Industrial Zone, Jalandhar - 144004  
Phone : +91-181-2601540, 2601541; Fax : +91-181-2601741  
E-Mail : vavalves@vtm-utam.com, info@fedreflowmeters.com  
Website : [www.vtm-utam.com](http://www.vtm-utam.com), [www.fedreflowmeters.com](http://www.fedreflowmeters.com)  
Due to continuous development program, design and  
data in this leaflet are subject to change without prior notice.